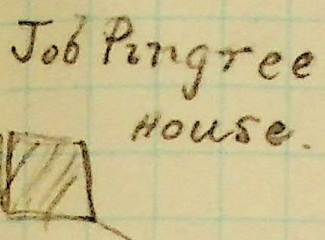


Franklin Str.



Job Pingree House.

Wyrie

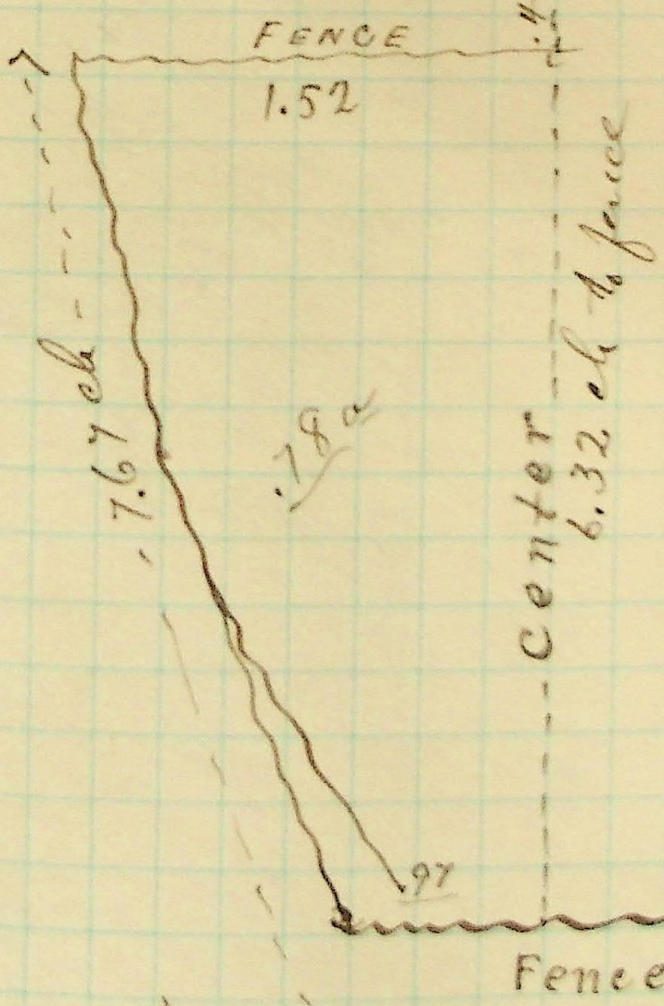
N. LINE

9th Str.

Pine Stake

8°58' 1/2"

Obs Pk



from the above Point, to the N.E. corner of Lot 29 3-10-8-05. West 1.57 ch & 76.43 ch, according to City Plat. Lot 70212 being ground 71.7 ch on the ground instead of 10.32 as Recorded on plat.

July 16-1887. Slough.